



CC TEAM CHRISTMAS CHALLENGE

Let's celebrate
together, all across
the county!

10th - 12th December,
2021



CC TEAM CHRISTMAS CHALLENGE 2021

The Girlguiding Derbyshire Christmas 'event' will take place from 10th - 12th December. We've let you know about this in plenty of time so that you can start talking to your guiding friends and get planning!!

As the coronavirus restrictions are lifting, we know that you are all wanting to meet face to face but there is still a frizzle of nerves about bringing everyone together as massive group and we think that you may prefer to do this in more manageable chunks!

OUR CHALLENGE TO YOU!

Our challenge to you is to organise an 'event' to bring us all together during the weekend of 10th - 12th December. This can be held in units, districts, areas, with local or connected units or Trefoil Guilds. It can be virtual or your girls could take part as individuals, if your situation requires this. Check out the activity ideas pages to get your imagination going.

OUR CHALLENGE FOR THE CC TEAM!

Our challenge for the CC team is to visit or be a part of as many of these events as possible! We'd love you to invite us along and if we can, we'll be there. First come first served, but by now you'll know that the CC Team love a challenge! (nearly as much as they love Christmas!!)

You'll need to let us know about your event for a CC Team flying visit! Just send a quick email with all the details (venue postcode, type of event, timings, who will be there etc. to

events@girlguidingderbyshire.org

CC TEAM CHRISTMAS CHALLENGE



10th - 12th December, 2021

All over Derbyshire!



COUNTY CHRISTMAS CARD EXCHANGE

For the first part of the challenge we would love you to send a Christmas card from your unit to another one in Derbyshire.

Your card can be any shape or size, handmade or bought. (it is the actual exchange of the cards which is important)

Make sure that you have sent your card to the county office (address below), **no later than 30/11/21** so that we can re-direct them before the event.

Girlguiding Derbyshire Christmas card exchange,
Suite 3C, Unicorn Business Park,
Wellington Street,
Ripley
Derbyshire.
DE5 3EH



Your card must be in a blank envelope with the correct amount of postage attached.



Make sure that the slip (included at the back of the pack) or a note with all the details are included so that your unit get a card in return.

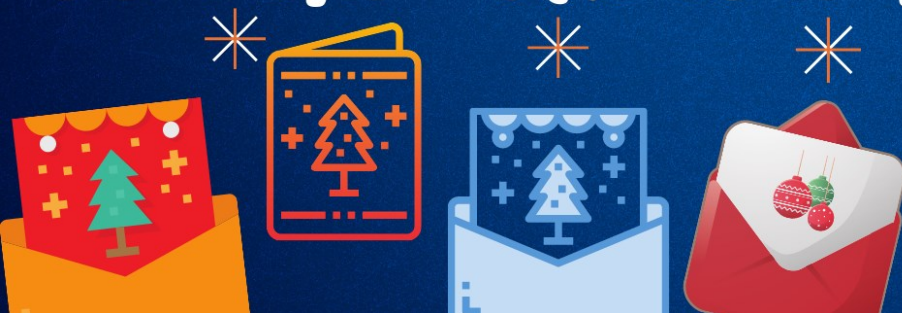


The county office staff will then send the cards randomly to other units that are taking part in the card exchange.



Cards for any members of the county team can also be sent into the office for re-direction, as long as they are received with names and the correct postage on.

CC TEAM CHRISTMAS CHALLENGE



Christmas Card
Exchange



CHRISTMAS ACTIVITY IDEAS

- ♦ Put on your own Christmas show. Christmas is often associated with talent show finals, so why not put on a talent show in your unit?
- ♦ Do a Christmas good turn
- ♦ Entertain with some carol singing
- ♦ Make Christmas cakes to share with others these could be traditional or with a modern twist (see later in the booklet for some yummy recipes)
- ♦ Meet outdoors and search for Santa!
- ♦ Do woodland crafts or hold a 'Wassail'
- ♦ Make lanterns and hold a Lantern parade
- ♦ Have a winter campfire with hot chocolate
- ♦ Hold a Carol service
- ♦ Take part in a 'Secret Santa' present exchange
- ♦ Have a Christmas craft day or session
- ♦ Visit a Christmas show or pantomime
- ♦ Set up a winter themed Escape room activity
- ♦ Think about your favourite Christmas memories, you could ask other people to share theirs with you too. These could be family members or friends
- ♦ Do you wanna build a snowman? Get outside and build snowmen, be creative if there isn't real snow!



- ♦ Coordinate a collection for a charity such as a food bank, selection boxes or toys for vulnerable families or socks for homeless charities
- ♦ Do some sustainable Christmas activities eg. make crafts such as recyclable wrapping paper or reuse old Christmas cards
- ♦ Decorate trees in your locality or join in with a local Christmas tree festival—A guiding themed tree would be lovely and great publicity
- ♦ Set up a Christmas trail or treasure hunt in your town or village, ask local businesses or public buildings to ‘hide’ items and then set the challenge of finding them.
- ♦ Have a traditional Christmas party with party food and traditional games
- ♦ Cook a traditional Christmas dinner and invite people to enjoy it with you
- ♦ Find out about winter season traditions from other countries
- ♦ Everyone loves to play board games over the holiday period, why not hold a board game session. You could always try Christmas Boggle and find as many words of four letters or more in the words SEASONS GREETINGS.
- ♦ People often associate the smell of pine with Christmas as that’s what Christmas Trees smell of. What other smells remind you of Christmas and why? Have a go at making something with that smell such as a candle

CC TEAM CHRISTMAS CHALLENGE



Activity
Ideas!



LINKS AND HANDY HINTS

It's completely up to you how you complete your challenge or hold your event—here are a few links and handy hints if you need a bit of inspiration to get going. Please use your own imagination for your events—we can't wait to see what you all get up to!

Lots of lovely craft and activity items can be found here on the event Pinterest board [CC Team Christmas Challenge Ideas](#) We'll be adding more as we come across them.

Use YouTube to find backing tracks for Christmas Songs and Carols to use in your own shows—just type 'Christmas Karaoke' into the search bar.

The Bero recipes are hard to beat for Christmas Cakes and Stained Glass window biscuits [Be-Ro Recipes](#)

If you are looking to make the individual Christmas cakes in a bean tin then the best size tin is 200g. To save the expense of buying small cake boards, just cut out squares of corrugated cardboard and cover them with foil.

www.bbcgoodfood.com have a great vegan Christmas cake recipe which is great for anyone with dietary needs or preferences or lots of Christmas themed cupcakes for something a bit different

The Woodland Trust have some top tips for an eco friendly Christmas here [Tips for an Eco-Friendly Sustainable Christmas - Woodland Trust](#)



LINKS AND HANDY HINTS

If you decide to go and visit a show or pantomime, don't forget to ask if they do a group booking—if you join with other units you may be able to get a really good deal on the tickets! This year the Derby Arena panto is 'Sleeping Beauty' and the Chesterfield Pomegranate Theatre panto is 'Beauty and the Beast'.

If you're holding Christmas campfire then you can sing Christmas songs and carols or adapt some ordinary songs to fit—new classics such as 'Alice the reindeer has five bells' or a raucous edition of 'The twelve days of Christmas (Guiding style)' can be lots of fun!

There are some great Christmas Escape room type ideas here

[Escape Room Activity ideas](#)



And finally, don't forget to share what you have been up to. Your Area and District commissioners along with the Growing Guiding and Social Media reps will all have ways to share locally.

Any photos with permission to share on the county social media and stories of what you've all been up to can be sent to events@girlguidingderbyshire.org

CC TEAM CHRISTMAS CHALLENGE



Activity
Ideas!



ALL THE INFO!

TO ORDER BADGES

The badge will be shaped to fit with the other CC Team Challenge Badges and will include the year 2021. They are £1.00 each plus postage.

We will have a limited amount in stock, which will be sold on a first come, first served basis before the event. We will then make another order on Friday 17th December to allow anyone who was unsure of numbers etc. to order after the event. These will take 4–6 weeks, so will be with leaders by the end of Jan 2022.

Please fill in the google form using the link below. You will then need to send in your payment to the County Office (either by bank transfer or a cheque).

[Click here to order badges](#)

TO SEND IN YOUR CHRISTMAS CARDS FOR THE EXCHANGE

Return this slip with your card or enclose a note with all of the required info

✂-----

This card is sent from (unit name) -

Please send our returned Christmas card to....

Unit name -

Address - c/o

Leaders name and contact email address -

DON'T FORGET TO ATTACH THE CORRECT POSTAGE TO YOUR CARD

ALL THE INFO! (cont'd)

TO BOOK A CC TEAM FLYING VISIT

Just send a quick email with all the details (venue postcode, type of event, timings, who will be there etc) to -

events@girlguidingderbyshire.org

CORONAVIRUS GUIDELINES

As with anything at the moment, all events need to be planned in accordance with the current guidelines from Girlguiding and also from the government.

The current Girlguiding Guidelines can be found here -

<https://www.girlguiding.org.uk/making-guiding-happen/coronavirus-keeping-safe/meetings-during-covid-19/>

It's up to the unit leader and/or the event leads to make sure that any event is fully risk assessed and that your DC is informed of any activities that are taking place away from your normal meeting times and venues and has seen any additional risk assessments that she needs to.

We hope you have a great time
completing your challenge and wish you
✧ all a very Happy Christmas! ✧

