

Meet the team

HELLO and welcome to July's edition of **DIGI-POST**, your monthly newsletter.

If you have any feedback about the newsletter please email accgrowth@girlguidingderbyshire.org.

Let us introduce you to our Membership Growth & Retention Team



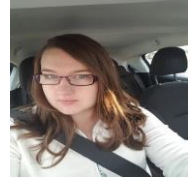
Alison Brown
Social Media
Co-ordinator
[Click Here to Email](#)



Laura Cooper
Website Co-Ordinator
[Click Here to Email](#)



Claire Pickard
Growth & Retention
[Click Here to Email](#)



Alanah Miles
PR & Marketing
[Click Here to Email](#)

Please [CLICK HERE](#) to visit the Website and read more about the Team and their Guiding Memories

Training

Due to the current situation all planned County First Response and Safe Space Trainings have been cancelled. We are continuing to review the feasibility of holding face to face trainings based advice from Girlguiding HQ.

Date	Training	Time	Venue	Booking Link
Tue 14 th Jul 20	Out and About	7pm-8.30pm	Virtual - via Zoom	Click Here (to book)
Wed 15 th Jul 20	Social Media Workshop	7pm-8.30pm	Virtual - via Zoom	Click Here (to book)
Wed 22 nd Jul 20	Walking Level 1	7pm-8.45pm	Virtual - via Zoom	Click Here (to book)

Just a reminder can complete your **Safe Space training online?** Level 1 and 2 can be fully completed online. The requirements for unit volunteers are summarised below:

Unit Role	Level 1	Level 2	Level 3
Leader/Assistant Leader/Leader in Training	✓	✓	As a minimum 1 Leader per unit requires L3
Unit Helper	✓	✓	
Unit Administrator/Treasurer	✓		
Unit Occasional Helper	✓		
Unit Residential Occasional Helper	✓	✓	
Young Leader	✓	✓	
Young External Volunteer (e.g. D of E)	✓		

[CLICK HERE](#)
LEVEL 1
TRAINING

[CLICK HERE](#)
LEVEL 2
TRAINING

Events

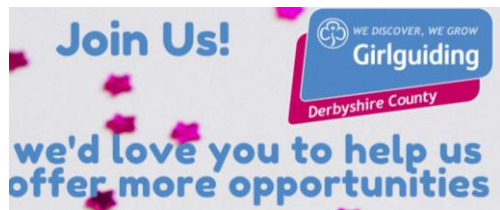
Below is a summary of the County Events coming up in the next few months.

Date	Event	Time	Venue	Booking Link/ More Information
Wed 1 st Jul 20	Leaders Fun Session - Relaxing Wednesday with Mary	7pm- 8.00 pm	Via Zoom	Click Here
Tue 7 th Jul 20	Leaders Fun Session - Fun Crafts with Izzy	8.15pm-9.15pm	Via Zoom	Click Here
Tue 14 th Jul 20	Leaders Fun Session - Taskmaster with Rachel	7pm-8.00pm	Via Zoom	Click Here
Thur 23 rd Jul 20	Leaders Fun Session - QuizBingo with Ali	7pm 8.00pm	Via Zoom	Click Here
Sat 14 th Nov 20	Cityopoly 2020	All day	Across Derby	Coming soon



Virtual Campover 2020 was a huge success. Thank you to everyone who took part - 7,500 badges have been sold and will be sent out as soon as received from the suppliers. Thanks to your support we have raised over **£4,500** which will be split between our two charities Derby and Burton Hospitals Charity Covid-19 appeal and the Chesterfield Royal Hospital Charity.

Initiatives

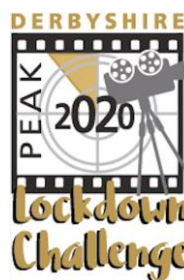


Recruitment and Retention

Leaders do you have parents engaging with you in your virtual unit meetings? Why not see if they want to get more involved? You can sign them up as a Occasional Unit Helper (no need for a DBS) although they do need Safe Space Level 1 and when you return to physical guiding they may want to continue to help out!

Peak Lockdown Challenge

Looking for something to do with your girls during what would have been the week of Peak Camp (26th July to 1st August) then wonder no more! We are excited to tell you that this weekend, we will be releasing details of our Peak 2020 Lockdown Challenge. Featuring activities related to all of the subcamps, including 'staff' and 14-18's and a special souvenir badge too! What more could you want? Look out for details coming soon!



Other notices



Celebrate our Lockdown Heroes - [Click Here](#) for more details on how to nominate!
Open until 31st July 2020.

County properties - Glenbrook, Pax Hoh and Pax Tor - remain closed for the Summer Season (July to September).

County Office will close from 31 July 2020. Further details for future correspondence and phone enquiries will follow by email to all Volunteers.

Girls and volunteers can still take part in the **Glenbrook Challenge Badge** from the comfort of their own homes. More information can be found by [clicking here](#).

New Girls on Go - After the first couple of weeks of joining please remember to add girls to the Unit on Go so that they can be removed off the Unit Waiting List.

Commissioner zone

All District Commissioners will now have received their County generic email address account to set up and use. Please remember to circulate to volunteers in your district. If you need any support with using Microsoft Outlook/Teams, why not join one of our support sessions:

Tue 7th July 18:00 - 19:00 - [Click Here](#) (to book)
Thu 16th July 18:00 - 19:00 - [Click Here](#) (to book)

All District and Area Commissioners are required to complete **Safe Space Level 4**, this is now available as an online webinar training for those commissioners who have already completed levels 1, 2 and 3. Email Leadership.EmailAccount@girlguiding.org.uk for more details and to sign up and **LOOK OUT** for information coming from Girlguiding Midlands about more of these online Webinars becoming available from July.

Do you need any support to do virtual district meetings? Log into your Go Account and access the Learning Opportunities to register for online Webinar training.

And finally, we would like to thank all of you who were able to attend the County COVID-19 Impact briefing and for your subsequent comments/feedback, they are greatly appreciated.

The awards committee were once again delighted to receive so many nominations for this year's awards and spent a number of lovely hours reviewing all of those nominations and we are thrilled to announce that the following people will be receiving awards this year, along with others (yet to be announced) who have been nominated for the Chief Commissioners Awards. If you know anyone who should receive an award next year, please let us know.

<https://www.girlguidingderbyshire.org/derbyshire-awards>

Spirit of Guiding



Tess Bramley
Laura Burton
Rebecca Burton
Teegan Carpenter
Rihanna Cumpstone
Isobel Gains
Emma Illsley
Gracie Johns
Hattie Johns
Emily Kelly
Ysabel Mackley
Isabelle Mair
Natasha Payne
Gemma Peterson
Emily Richardson
Kacey Roe
Ava Wood

1st Brampton Moor Guides
1st Ashbourne Guides and Rangers
1st Ashbourne Guides and Rangers
4th Derby Guides
1st Alvaston Guides
3rd Dronfield Woodhouse Guides
1st Belper Brownies
1st Long Eaton Guides
2nd Long Eaton Brownies
2nd Loundsley Green Guides
3rd Dronfield Woodhouse Guides
1st Long Eaton Khelone Rangers
1st Gresley Guides
1st Phoenix Rangers
1st Long Eaton Guides
1st Inkersall Guides
2nd Matlock Rainbows

County Rose



Lucie Allen
Sabina Barber

Lisa Bouskill
Rachel Bridge
Alison Brown
Chris Connolly
Dot Lancaster
Claire Orford
Wendy Pinchbeck
Hazel Taylor
Suzanne Tate
Ann Vardy

2nd Long Eaton (St. Johns) Guide Unit
4th Derby (Central United Reform Church) Rainbow Unit
1st Barlborough Guides
2nd Hilton Brownies
County Team
County Team
1st Somercotes Guide
2nd Matlock Brownies
1st Whittington Rainbows
3rd Oakwood Brownies
Long Eaton Guide Unit
1st Pilsley Brownie Unit

Thanks & Recognition Thanks Badge



Ilona Beer
Frances Booth
Heather Gooch
Tamsin Hudson
Sarah Leeson
Chloe Purcell
Rhiannydd Rees
Mary Richmond
Jill Vardy
Elaine Wright

1st Brampton Moor Brownies
Somercotes Brownies
1st Brampton Moor Brownies
2nd Oakwood Guides
4th Chaddesden Brownies and Guides
2nd Oakwood Guides
2nd Oakwood Guides
2nd Swanwick Guides
1st Pilsley Brownies
South West Area Treasurer/Administrator



Tina Eyre

Chesterfield Area