

Stop Press

HELLO and welcome to the September edition of DIGI-POST, your monthly newsletter

We would like to extend our gratitude to all of our members who supported events to mark the passing of Her Majesty, The Queen and helped fellow volunteers and our young members during what was a very difficult time for so many. Our thanks also go to the 9 volunteers from our County who volunteered as marshalls in London during the lead up to, and the day of the state funeral.

**SHINE!** We're so excited to be able to include details of SHINE in this months Digi-post. There is something there for all our members. You can find details of participant booking and volunteer staff recruitment from page 3 onwards.

Learning & Development

**Mentor Training for Leadership Development Programme - Monday 17<sup>th</sup> October 2022, 19:00 at Mickleover Royal British Legion, 30 Poppyfields Drive, Mickleover, ,Derby DE3 9GB - To book your place - [Click here](#)**

**1st Response F2F Module 1 Practical Training - Mon 7th Nov - 19:00-21:00 at Buxton Fire Station Community Room, Staden Lane, Buxton, Derbyshire, SK17 9RZ - To book your place - [Click here](#)**

**1st Response F2F Module 1, 2 & 3 Training - Sat 12th Nov - 09:30-16:00 at Melbourne Scout & Guide Hut Pack Horse Rd, Melbourne,, Derbyshire, DE73 8BZ - To book your place - [Click here](#)**



## PEER EDUCATION TRAINING WEEKEND

**WHEN?** 18th -20th November 2022  
**WHERE?** Drum Hill Campsite, Morley Ln, Little Eaton, Derby  
**WHO FOR?** Members aged 14 - 25  
\*Priority for members in Nottinghamshire and Derbyshire\*  
**HOW MUCH?** £25 (refunded upon attendance)  
**WHERE DO I SIGN UP?** via the events page on the Midlands website (link in QR code)



Events

Date	Event	Venue	Booking Link/More Information
Friday 7th October - 7.30pm	SHINE County Camp Info Session	Via Zoom	<a href="#">Click here</a> to book your virtual place
Saturday 8th October	Kinder Walk	Peak District	More details can be found at <a href="http://www.derbyshirescouts.org/kinder">www.derbyshirescouts.org/kinder</a> Contact <a href="mailto:walking@girlguidingderbyshire.org">walking@girlguidingderbyshire.org</a> for an entry form
Friday 4th November	Duke of Edinburgh Award Presentation Evening	The Post Mill Centre, South Normanton	19:00 arrival for 19:15 start
Sat 5th - Sun 6th November	Walking L1 Training	Pax Tor	Contact <a href="mailto:walking@girlguidingderbyshire.org">walking@girlguidingderbyshire.org</a> for more information
Fri 18th - Sun 20th November	Peer Educator Training	Drum Hill, Derby	Please make sure that any Rangers, Young Leaders and Young Adult Leaders aged 14 - 25 are aware
Friday 25th November - 7.30pm	SHINE County Camp Info Session	Via Zoom	<a href="#">Click here</a> to book your virtual place
Friday 9th December	County Christmas Social / Campfire (open to all volunteers)	Pax Hoh	Come and join us for a Christmas tittle and carolling round the campfire. Booking info to follow.
Sat 22nd - Wed 26th July, 2023	SHINE County Camp	Lea Green, Matlock	**Save the date** See next page for more info

## Initiatives



The National Scout & Guide  
 Symphony Orchestra and Concert Band  
 BIRMINGHAM 2023



#NSGSO2023 #NSGCB2023

Applications for the 2023 NSGSO and NSGCB course are now open. The 2023 course will be the 48th year of the Symphony Orchestra, with the Concert Band now in its 8th year, running alongside the Orchestra course. The residential course is held in Stourbridge, West Midlands, with concerts held at prestigious venues in the Birmingham area.

The course runs from Sunday 30th July - Sunday 6th August 2023.

The closing date for applications is 9am on Sunday 11th

December 2022. To find out more about our course, entry requirements, and cost, visit the website [nsgso-nsgcb.com](https://nsgso-nsgcb.com).

Please could you circulate this email and attached flier as widely as possible amongst all Guides, Rangers, Young Leaders and Inspire members aged 12-25 in your county. This is also a great opportunity for people looking to complete the residential section of their Gold DofE/QGA.

The course is hosted by Birmingham Scout County in conjunction with Girlguiding Birmingham but is open to applicants from across the UK who [meet the selection criteria](#).

To apply for the 2023 NSGSO or NSGCB course and to find out more details, please visit [nsgso-nsgcb.com](https://nsgso-nsgcb.com).

You will hear before 31st December 2022 if your application has been successful or not.

Please email [alice@nsgso-nsgcb.com](mailto:alice@nsgso-nsgcb.com) with any queries that you have.

## COUNTY INTERNATIONAL FOR GUIDES TO DISNEYLAND PARIS

We are exploring the possibility of a County International trip for Guides to Disneyland Paris in October 2023. In order for us to get planning we would like you to express your views via our no obligation, expression of interest form, accessed via the below link

<https://forms.gle/kf7jRGgadjiRskPr5>

Please do this by 16th October, 2023 and contact [international@girlguidingderbyshire.org](mailto:international@girlguidingderbyshire.org) if you have any queries



## Other notices



Heather Wheeler (MP South Derbyshire) has offered to do a Q&A either via zoom session or in person with a specific age range, to help answer any queries that any of the children/young adults pose. Please email [coral.jackson@parliament.uk](mailto:coral.jackson@parliament.uk) for more information.



On Saturday 22<sup>nd</sup> April 2023 Midland Region Singing Circles will be holding a region singing day.

This is a day of singing for fun, (we are not a choir). We sing mostly Guiding songs old and new, some from other countries, action songs and some quiet songs. You may not be aware that some of the songs have been composed by our very own talented Guiding members from the past to the present. It will be held in Shrewsbury at the Church of the Holy Spirit from approximately 10-4pm and cost about £5pp. The event is for adult members and young leaders. You will need to bring your lunch. If you have some GG song books, bring them with you. There will be more details and a booking form to follow on the Midlands/County events page. We know Guiders like to sing so please pencil the date in your diary and join us for music and merriment if you can.



## Commissioner zone

### Commissioner Support Sessions:

The next Commissioner Support Session is on Wednesday 12<sup>th</sup> October and is an online session – it will be a Zoom meeting starting at 7.15pm. Jane Leech, Commissioner Mentor Coordinator, is running the session and the topic is the new leadership scheme which is called the Leadership Development Programme (LDP). Please [click here](#) to book your place.

Next session will be held on 15th November 2022

### Safeguarding & Volunteer Code of Conduct Bookmarks

As requested, we have redesigned the Safeguarding & Volunteer Code of Conduct Bookmarks and have now distributed them to the AC's so you should be receiving them soon. There is one for every volunteer in your district, so please do give them out as they have useful information on them that is then readily available.



## Lea Green Development Centre

Sat 22nd - Weds 26th July, 2023

We're very excited to announce the booking details and options for SHINE 2023!

### **Full Camp**

**£125 (leaders £35)**

Open to Brownies, Guides and Rangers with their leaders  
Catering **not** included

### **Camp Staff**

**£35** (Catering **not** included)

Open to all over 18's - lots of roles available (see attached)

### **Service Team**

**£50** (Catering **not** included)

Open to all Rangers aged 16 - 18  
(Staff role but includes one day of activities)

### **Add catering**

**£80 per person**

Limited places available to add catering

### **Brownies Indoors** £150 (leaders £58)

2 nights indoors (Sat - Mon or Mon - Weds)

**Full catering included**

### **Rainbow Day**

**£20 (leaders £5)**

- Bookings will open via Eventbrite on Sunday 16/10/2022
- £40 deposit required within 2 weeks of booking



**SHINE@girlguidingderbyshire.org**

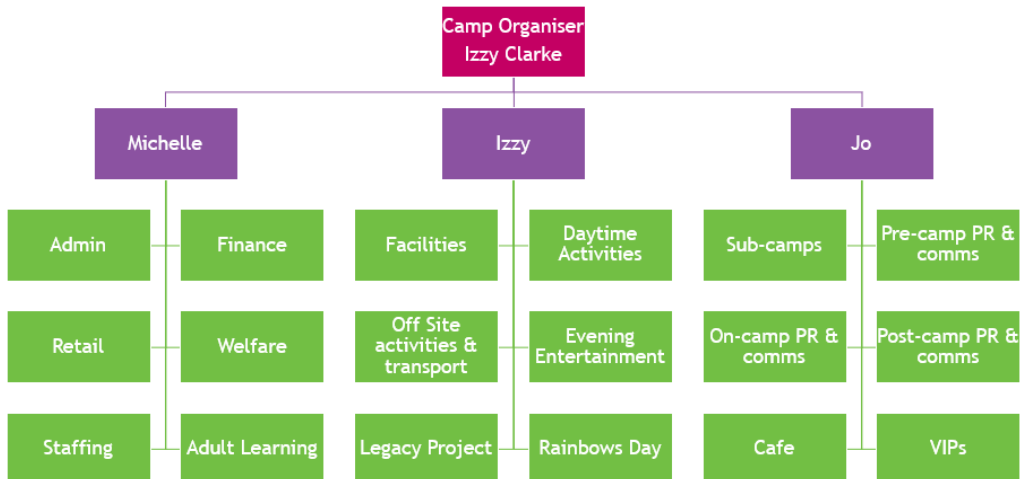
[Click here](#) to view the County Camp Organisation & Roles via our website or see the full org charts below.



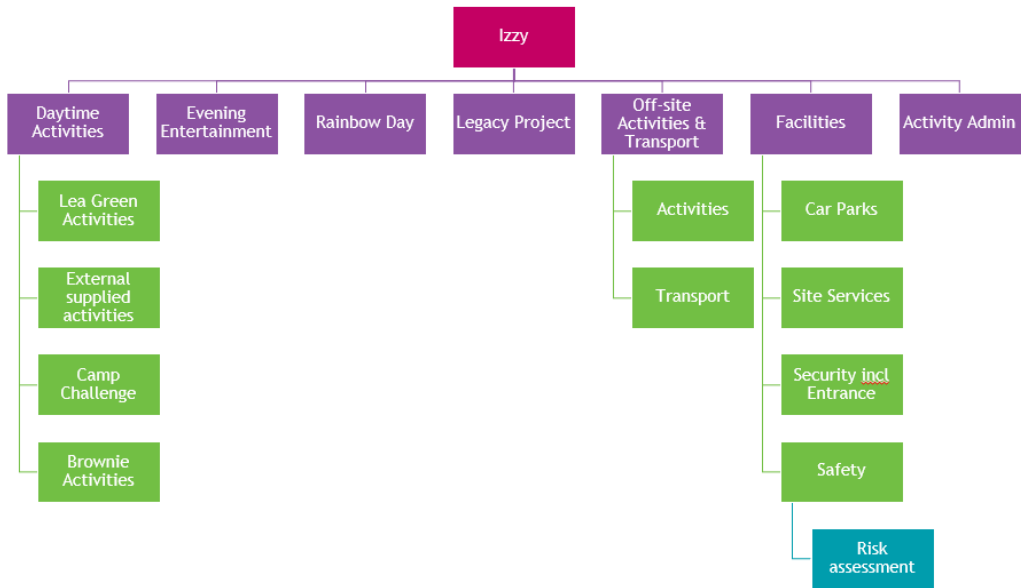
# SHINE 2023

## County Camp Organisation & Roles

### Overall Organisation



# Izzy's Team



## Izzy's Team Roles

Activity Team Leader x 3 (Day) x 1 (Evening)

Activity Assistants x 15 (Day or Evening)

Camp Challenge Creator

Rainbow Day Team Leader x 1

Rainbow Day Team Members x 4

Legacy Project Team Leader x 1

Legacy Project Team Members x 2

Offsite Activity Transport Co-Ordinator x 1

Facilities Team Leader x 1

Car Park Team Members x 4

Site Services Team Members x 4

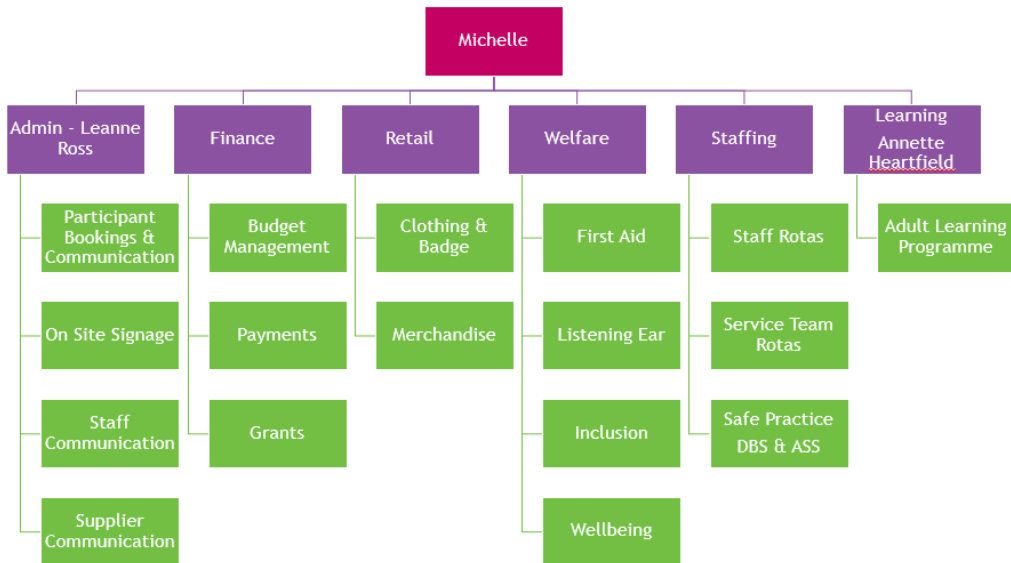
Safety Team Leader x 1

Safety/Security Team Members x 4

Most roles are available to staff, service team or unit leaders.

Contact:  
[SHINE@girlguidingderbyshire.org](mailto:SHINE@girlguidingderbyshire.org)

# Michelle's Team



## Michelle's Team Roles

Admin Team Leader

Admin Team Members x 2

Finance Team Leader x 1

Finance Team Member x 1

Retail Team Leader x 1

Merchandise Sourcing Team x 2

Retail Team Members x 4

Welfare Team Leader x 1

First Aid Team x 4

Listening Ear & Wellbeing Team Members x 4

Inclusion Team Lead x 1

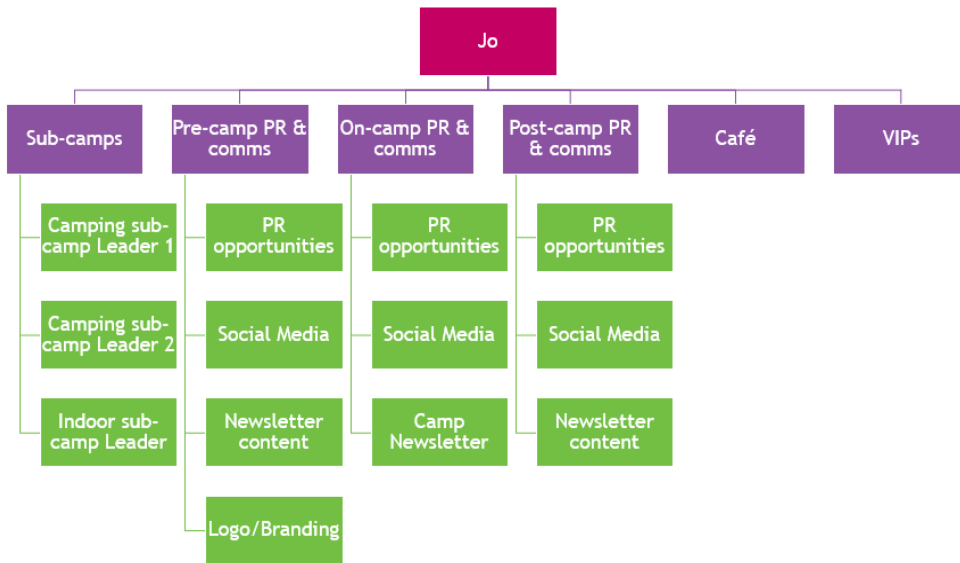
Staffing Team Leader x 1

Adult Learning Team Leader x 1

Most roles are available to staff, service team or unit leaders.

Contact:  
[SHINE@girlguidingderbyshire.org](mailto:SHINE@girlguidingderbyshire.org)

# Jo's Team



## Jo's Team Roles

- Camping Sub Camp Leaders x 2
- Indoor Sub Camp Leader x 1
- PR Team Leader x 1
- Social Media Team Leader x 1
- Social Media Team Members x 2
- Camp Newsletter Team Leader x 1
- Camp Newsletter Team Member x 1
- Hospitality Team Leader x 1
- Hospitality Team Members x 6

Most roles are available to staff, service team or unit leaders.

Contact:  
[SHINE@girlguidingderbyshire.org](mailto:SHINE@girlguidingderbyshire.org)